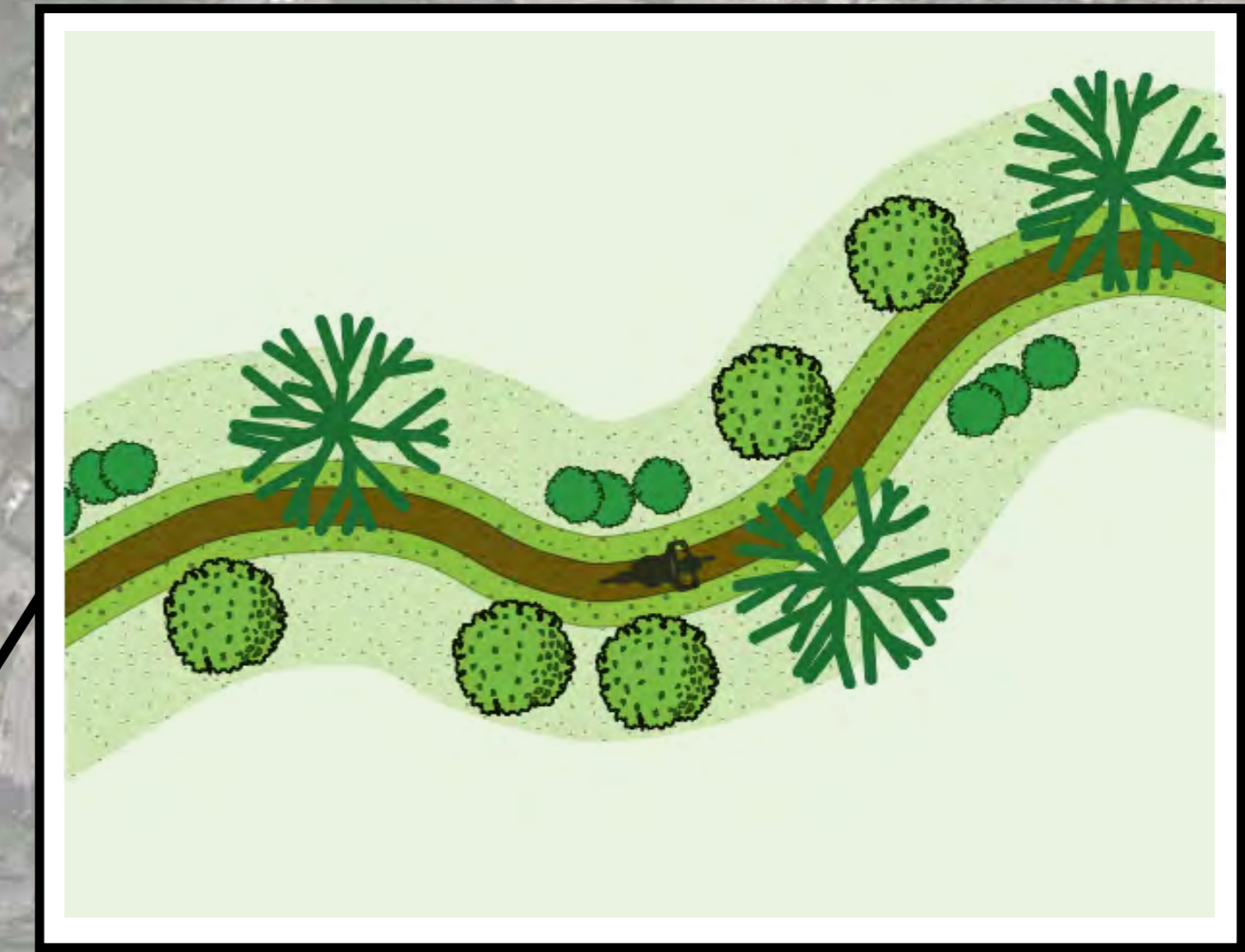
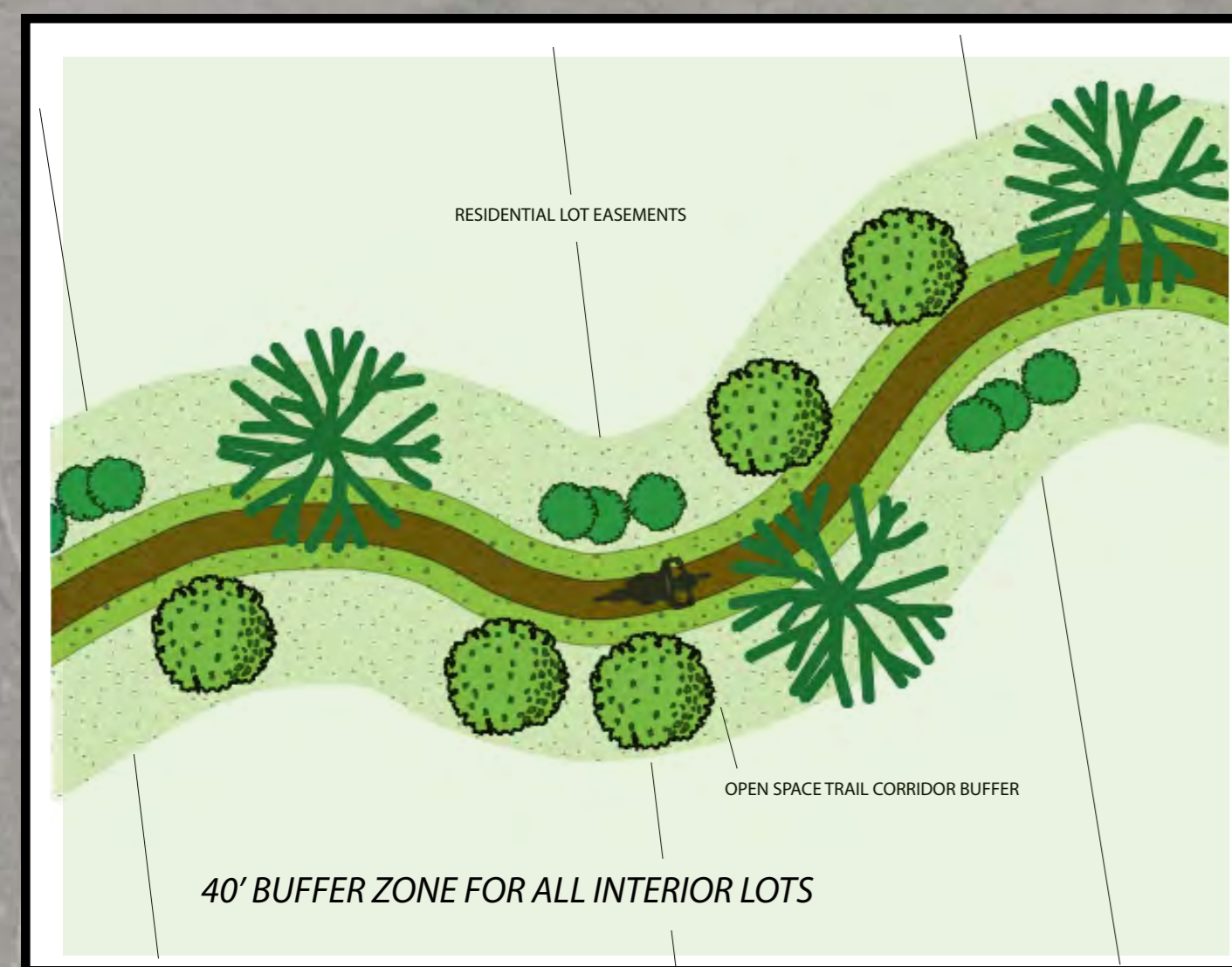


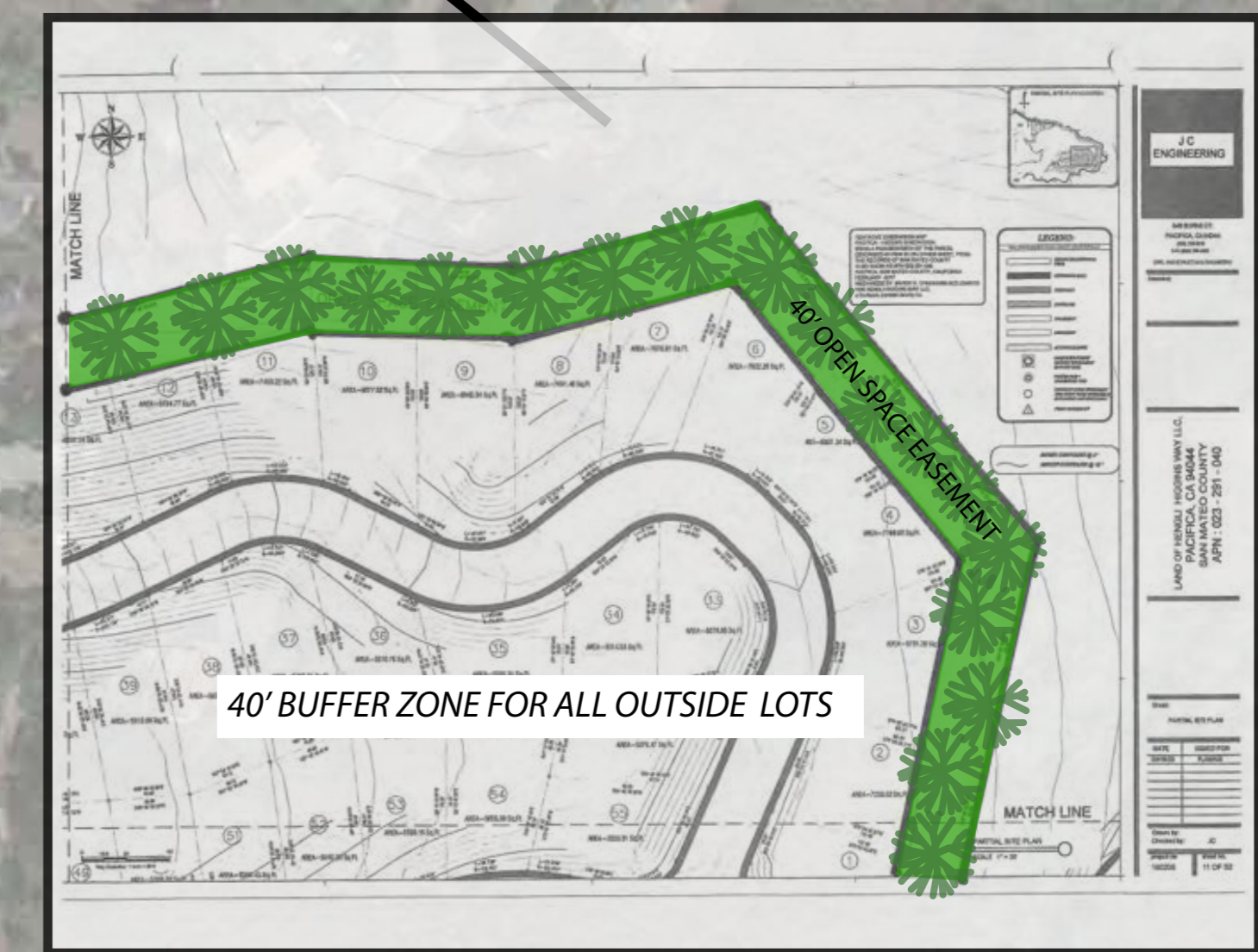
COMMUNITY OPEN SPACE CONSERVATION AREA



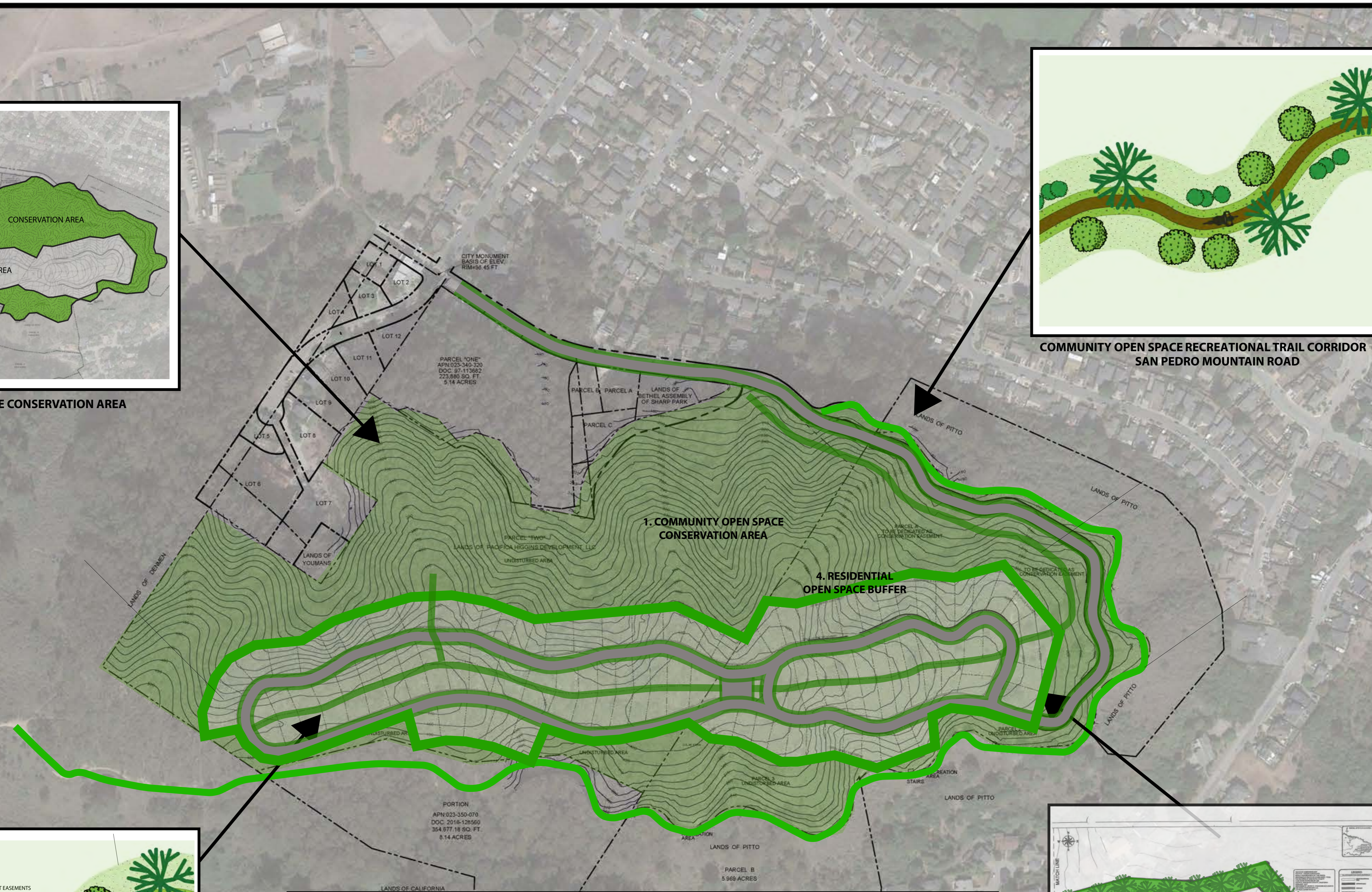
COMMUNITY OPEN SPACE RECREATIONAL TRAIL CORRIDOR OLD SAN PEDRO MOUNTAIN ROAD



RESIDENTIAL OPEN SPACE TRAIL CORRIDOR CONSERVATION BUFFER LINDA MAR RIDGE TRAIL



RESIDENTIAL OPEN SPACE CONSERVATION BUFFER



LINDA MAR WOODS OPEN SPACE CONSERVATION EASEMENTS & FORESTED COMMUNITY PLAN

Linda Mar Woods is a progressive community development in the Linda Mar neighborhood of Pacifica. The community is being planned with a comprehensive approach to open space conservation with four types of open space conservation easements designed to ensure ecological preservation.

Type #1: Community Open Space Area - the "conservation easement" protects the entire area.

Type #2: Residential Open Space Buffer - "open space easement" that wraps around the entire area to be developed. The width of this open space easement is uniformly 40 feet and it covers the back of all the outside lots in the subdivision. While the property encumbered by the easement is owned by the lot owners, they may not build on it. They have to leave it "as is" so it is a buffer between the subdivision and the area covered by the conservation easement.

Type #3: Residential Open Space Trail Corridor - this area is a dedicated trail corridor through the residential area with a buffer.

Type #4: Community Open Space Trail Corridor - this area is dedicated as a public recreational access trail corridor.

BIKE PARK DESIGNER

HILRIDE

HILRIDE PROGRESSION DEVELOPMENT GROUP LLC
747 ESTANCA WAY
SAN RAFAEL, CA 94903
CONTACT: NAT LOPES, PRINCIPAL
BIKE PARK DESIGNER
PHONE: 510-788-3124
EMAIL: NAT@HILRIDE.COM

CIVIL ENGINEER

JC ENGINEERING, INC.
848 BURNS COURT
PACIFICA, CA 94044
PHONE: 650-355-0615

PROJECT NAME:
Linda Mar Woods

PREPARED BY:
HILRIDE
NAME:
NAT LOPES
DATE:
11/15/21

SHEET NAME:
SITE PLAN

SHEET NUMBER:
L1

